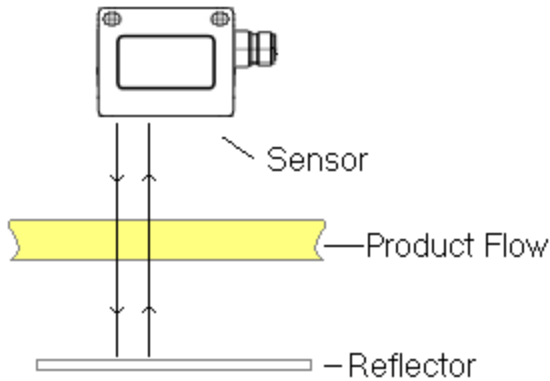


# Application Sheet - Sugar Solution

## Colour Measurement Results

### Application

The Senware colour system offers a simple way to measure the colour constancy of solutions, using the sensor in reflectance mode looking at the light returned from a reflector through a sight window.

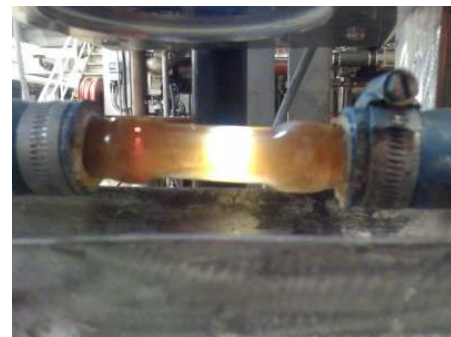


### Method

The Senware colour system typically reads colour in the widely accepted CIE L\* a\* b\* standard. For sample analysis, the inverted L component on sugar samples are compared with the corresponding ICUMSA reading with very good correlations (better than 0.9 possible).

These results can be converted to 4 - 20 mA signals for each of the inverted L, a and b signals for each sensor, or read across an industrial bus solution such as Ethernet/IP etc.

### Typical Colour System Sensor Installation :-



### Reasons for Senware Colour Gauge

- 1) The Senware colour system is easy to install and use.
- 2) Colour chromatic coordinates a and b available.
- 3) Four measurement sensors available per processor.
- 4) Solid state sensor, virtually maintenance free, sight window easy to clean.

### Senware Limited

Unit 4, Adelaide House  
Corbygate Business Park  
Corby, Northants. NN17 5JG

### For More Information :-

Tel:- +44 (0)1536 525834  
Fax :- +44 (0)1536 407813  
Email :- sales@senware.co.uk  
Website www.senware.co.uk