

Application Sheet - Biscuits

Colour Measurement Results

Application

The application is to measure the colour of Pasta, Typically for Egg based Pasta 'b*' is of particular interest as 'b*' is a measurement of yellowness , this gives an indication of the amount of Eggs in the mixture .

The sensor is typically placed 200 - 300 mm above the sheet of pasta .The Sensor can be straight on ,or angled depending on the specula reflection of pasta under the beam.

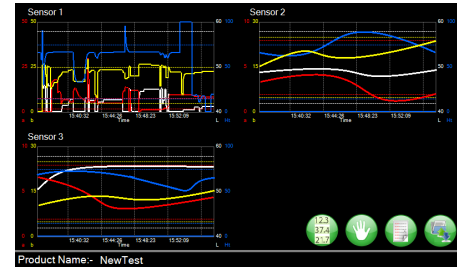


Method

The Senware colour system typically reads colour in the widely accepted CIE L* a* b* standard (other scales possible).

Typically the system calculates a running average . The results can be converted to 4 - 20 mA signals for each of the L, a and b signals for each sensor , or read across an industrial bus solution such as Ethernet/IP etc.

Graphical representation of the data is also available as an option.



Typical Colour System Sensor Installation :-



Reasons for Senware Colour Gauge

There are two main reasons for Senware systems:-

- 1) The Senware colour system can be used in the laboratory as a quick test, with no sample preparation , with samples placed directly under the sensor.
- 2) The Senware colour system can be placed on-Line , giving continual colour readings , for process / Quality control etc.

Senware Limited

Unit 4, Adelaide House
Corbygate Business Park
Corby, Northants. NN17 5JG

For More Information :-

Tel:- +44 (0)1536 408066
Fax :- +44 (0)1536 407813
Email :- sales@senware.co.uk
Website www.senware.co.uk